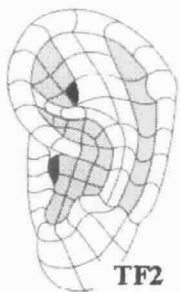
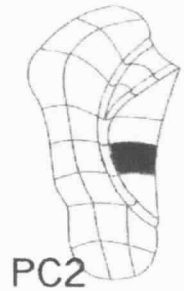
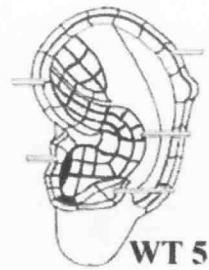
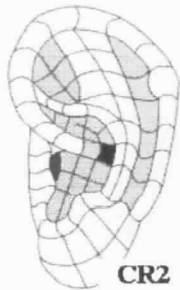
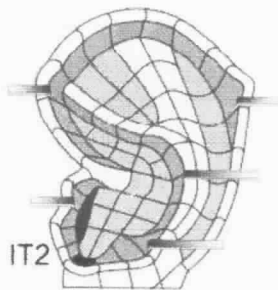
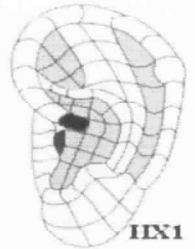
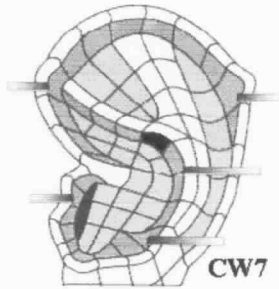
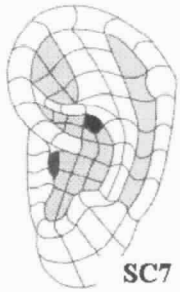


AcuPoint Analysis DIABETES MELLITIS (ADLT)



ESC07 PANCREAS, ASCITES POINT

ECW07 THYMUS GLAND, THORACIC SYMPATHETIC GANGLIA

EPC04

EHX01 Master Point 0, Point of Support, Solar Plexus, Umbilical Cord, Penis, or Clitoris, Sexual Desire, Bosch Point, Diaphragm, Hiccups. Located in a notch at the beginning of the Helix Root. This point brings the whole body toward a state of homeostatic balance

EIT02 Endocrine Point, Internal Secretion, Thyrotropins (TSH).

ECR02 LIVER, CIRRHOSIS, HEPATITIS

EPC02

EWT05 Master Point 4, (Endocrine Hormones), French Anterior Pituitary, Chinese Internal Secretion Point, Endocrine Hormone Point, Endorphin Hormone, Parathyroid Control. Located on the 5th zone of the Wall of the Antitragus. This master point brings Endocrine Hormones to their appropriate homeostatic levels, either raising or lowering their secretions. It functions by activating the Pituitary Gland below the brain, which is the master gland controlling all other Endocrine Glands.

ETF02 Master Point 1, (Shen Men), French Hip, Chinese Shen Men (Divine Gate), Pelvic Cavity, French Wonder Point. Located in the middle of the 2nd zone of the Triangular Fossa. This master point alleviates pain, tension, anxiety, and depression.